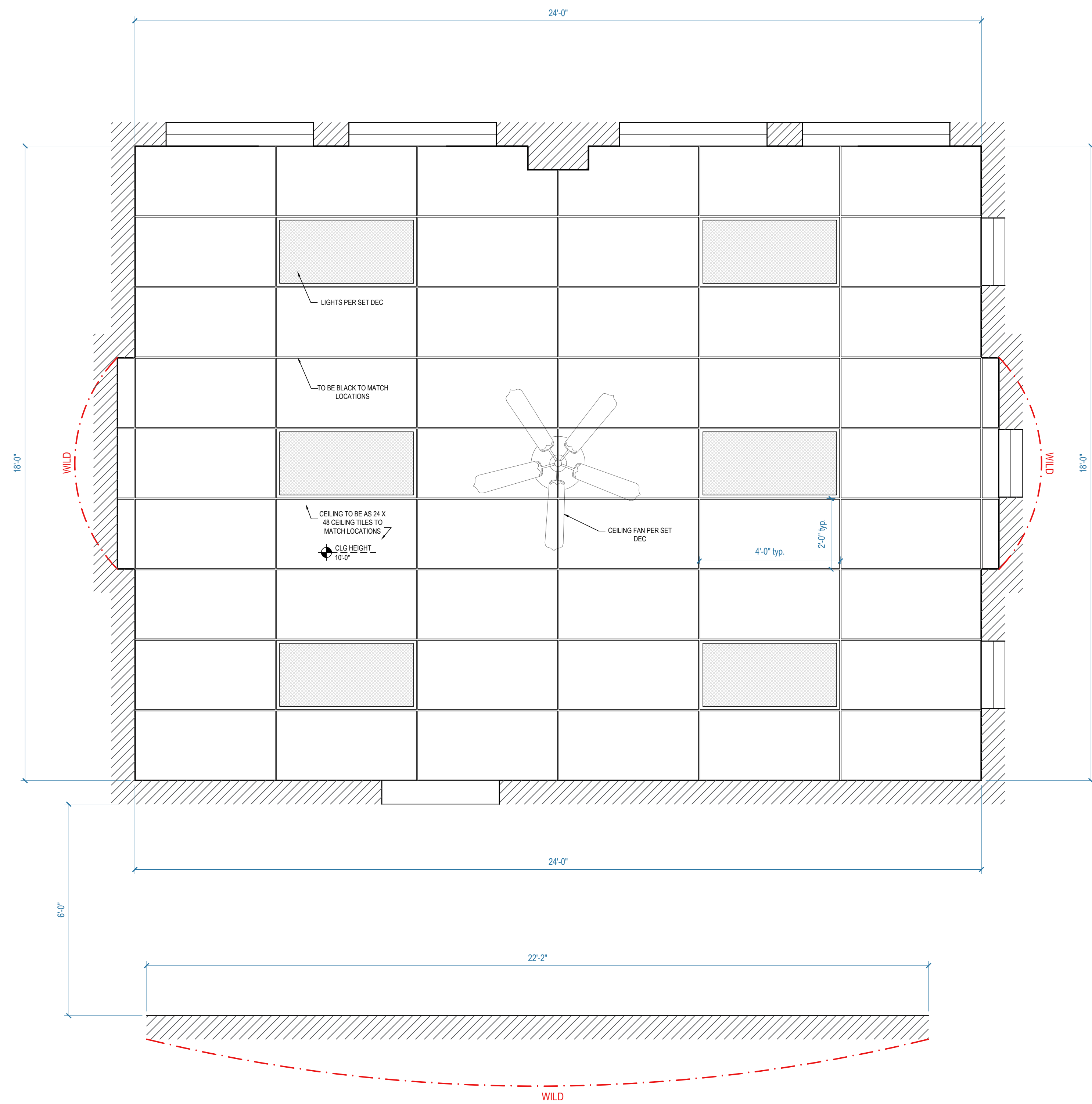


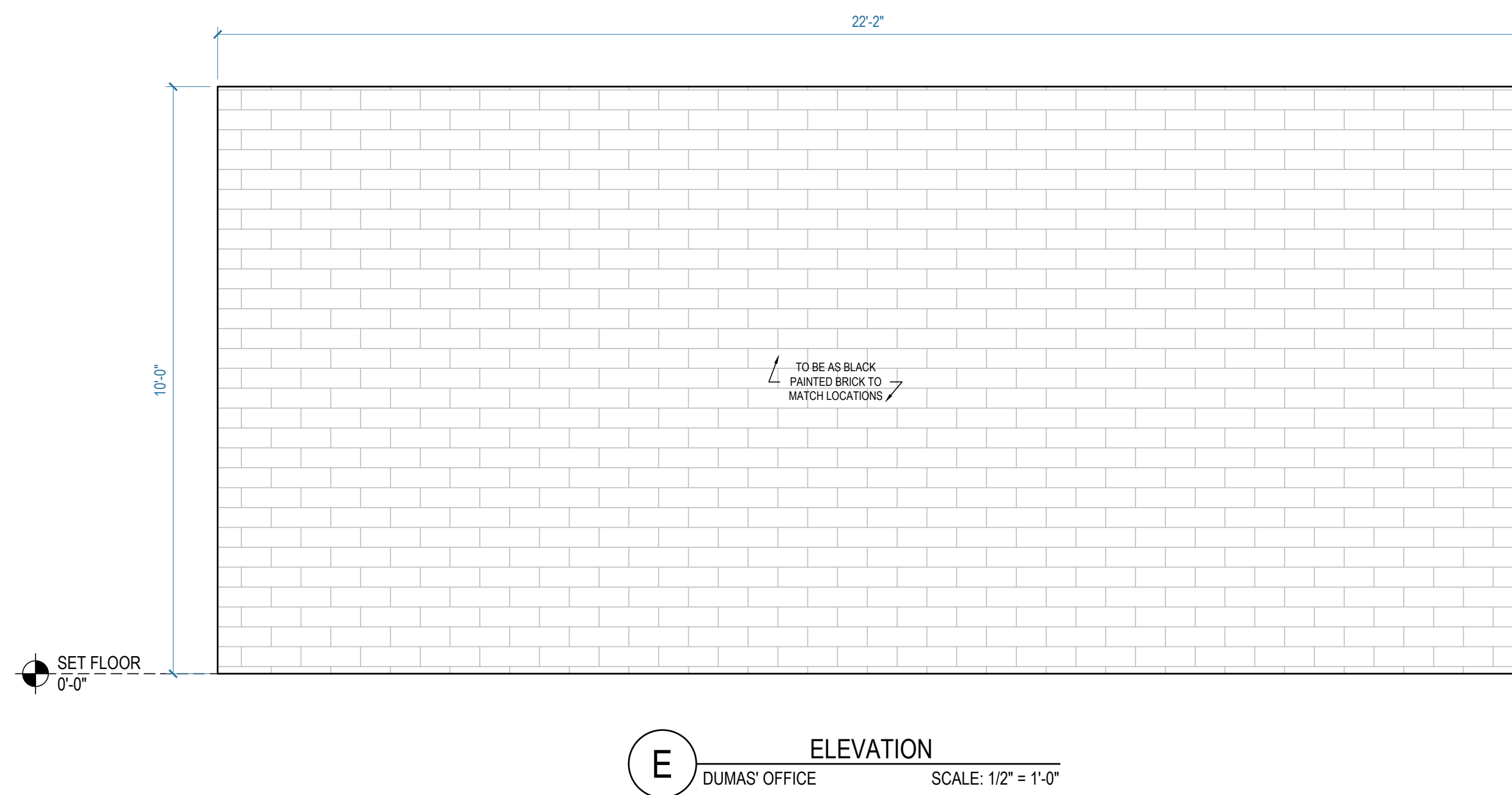
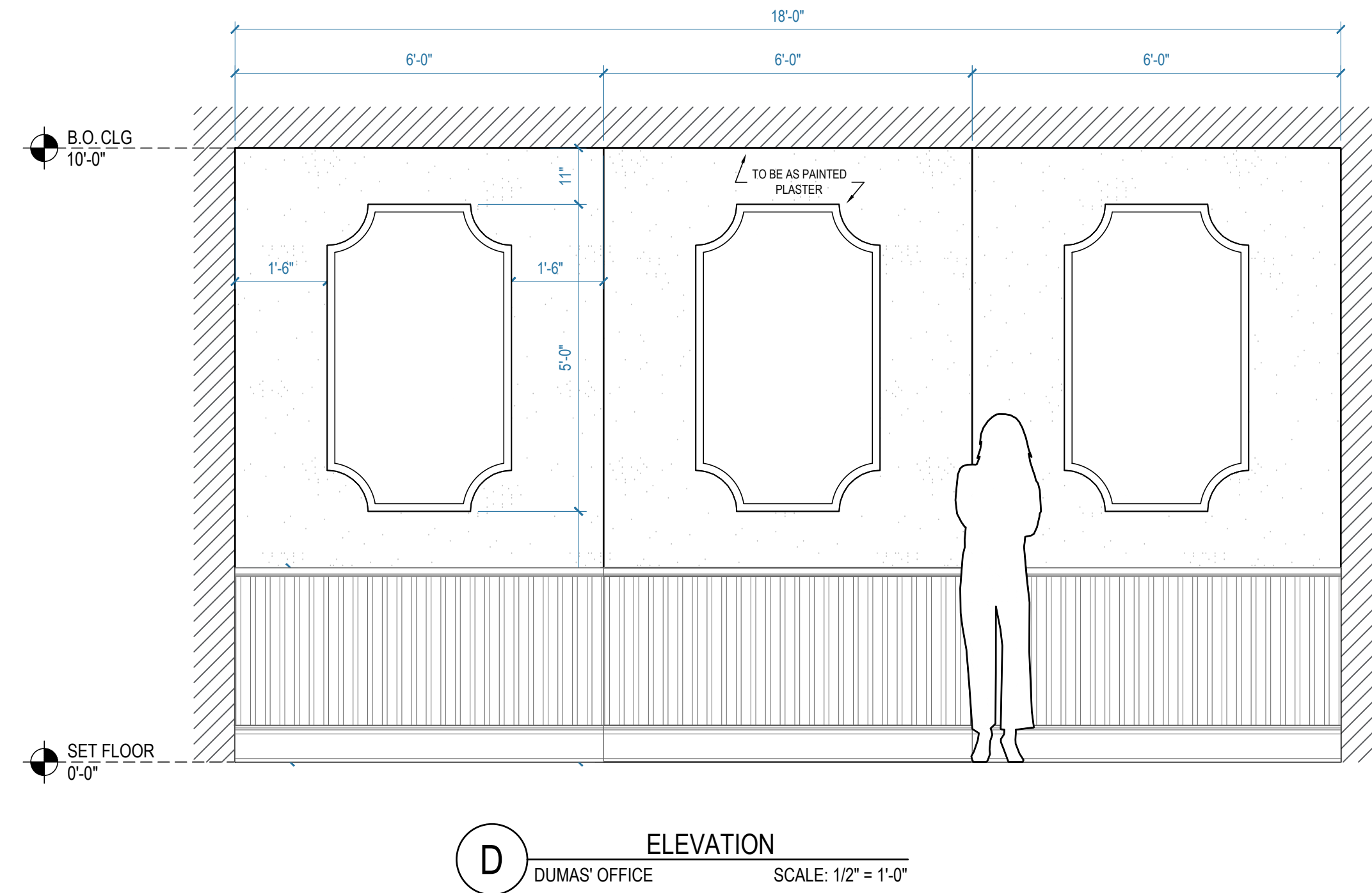
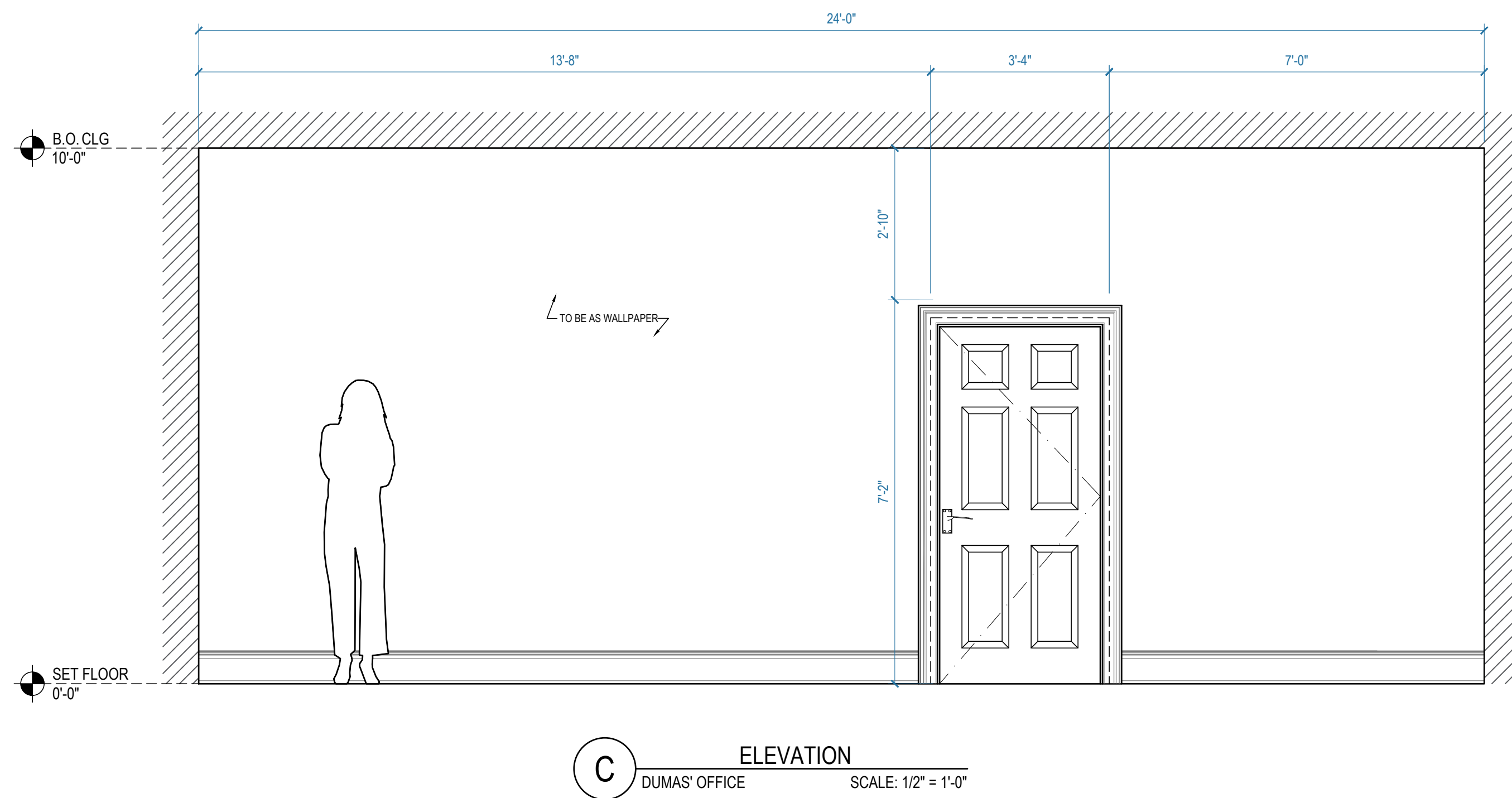
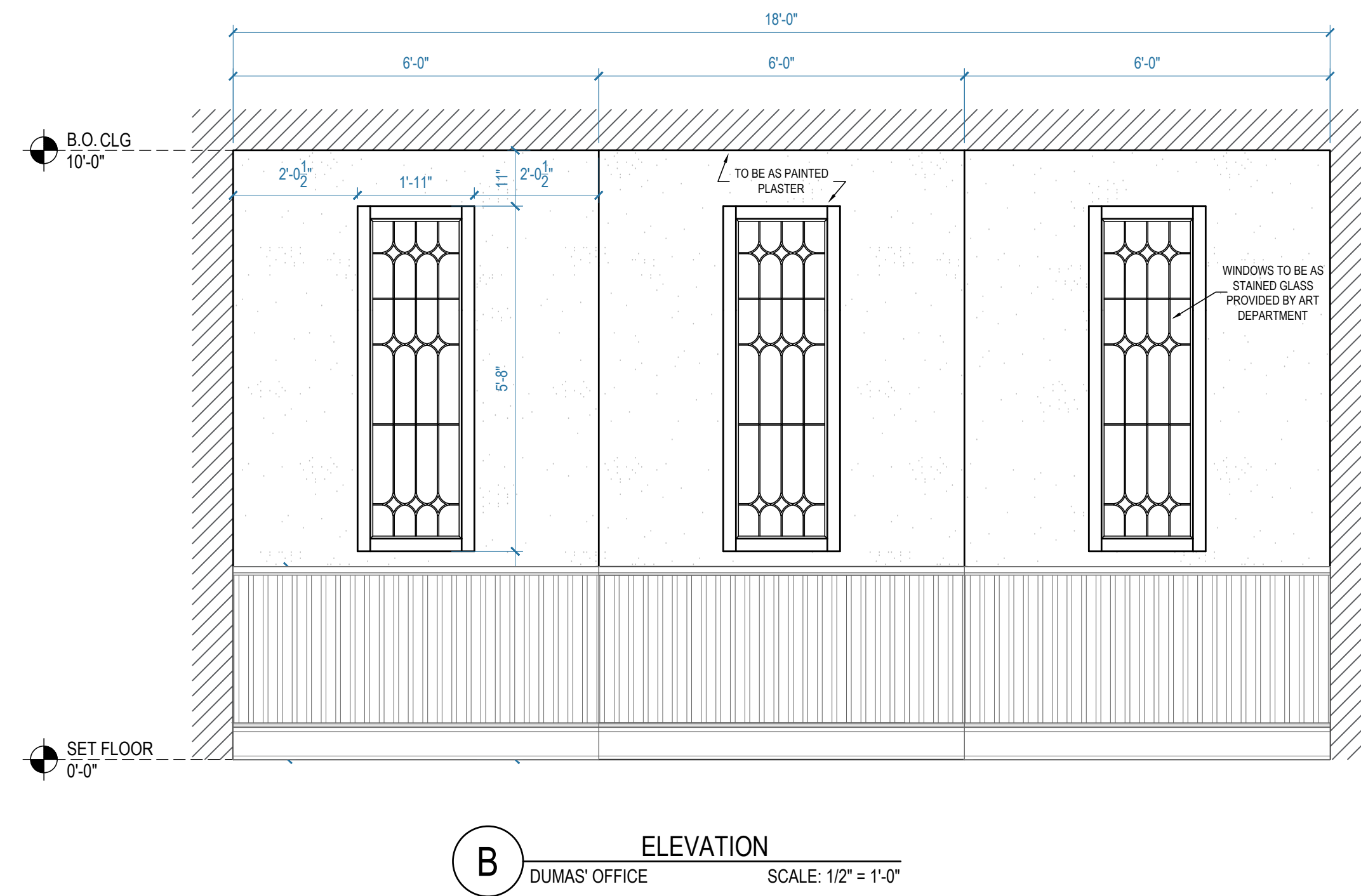
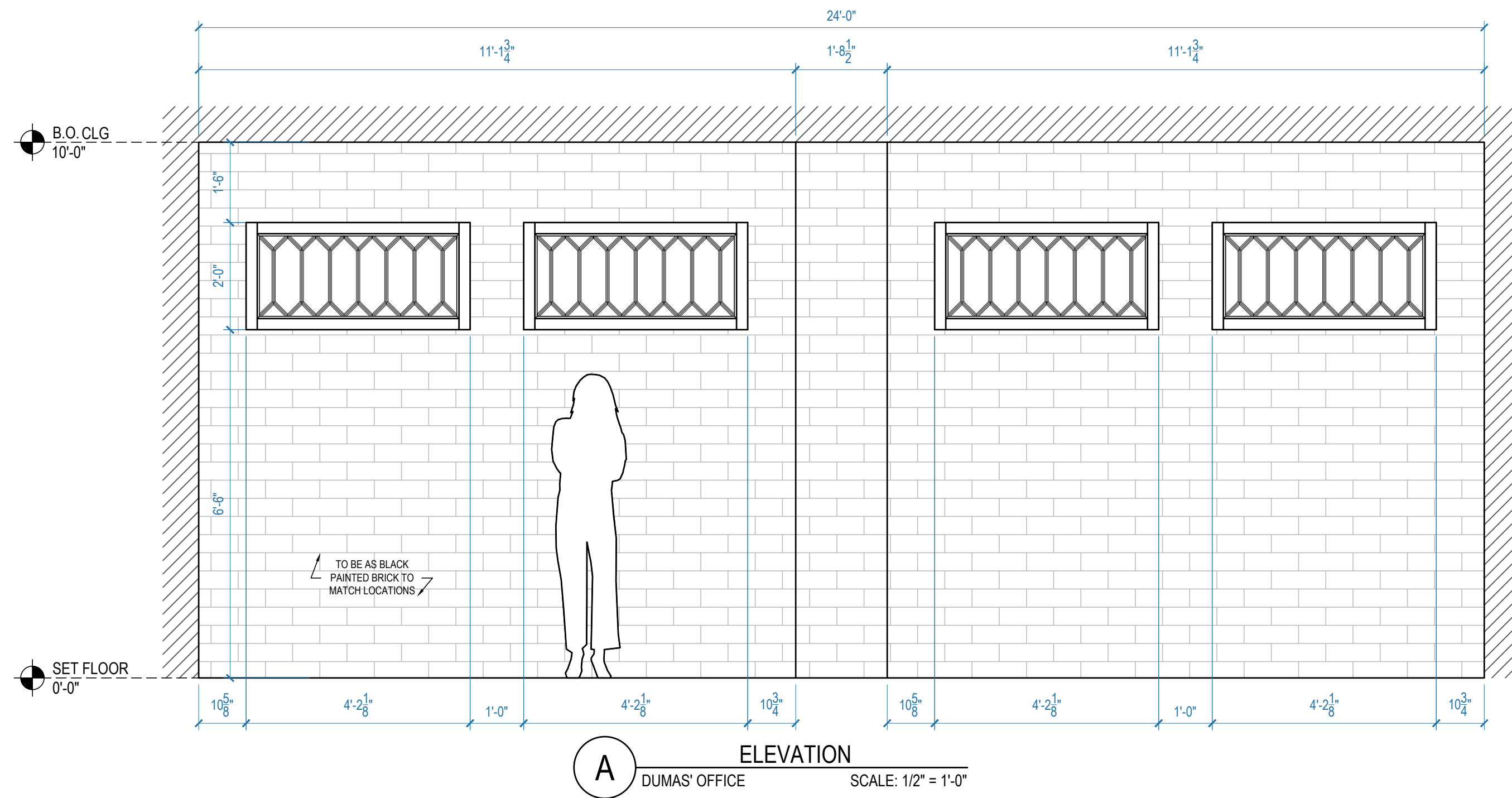
01 PLAN
DUMAS' OFFICE SCALE: 1/2" = 1'-0"



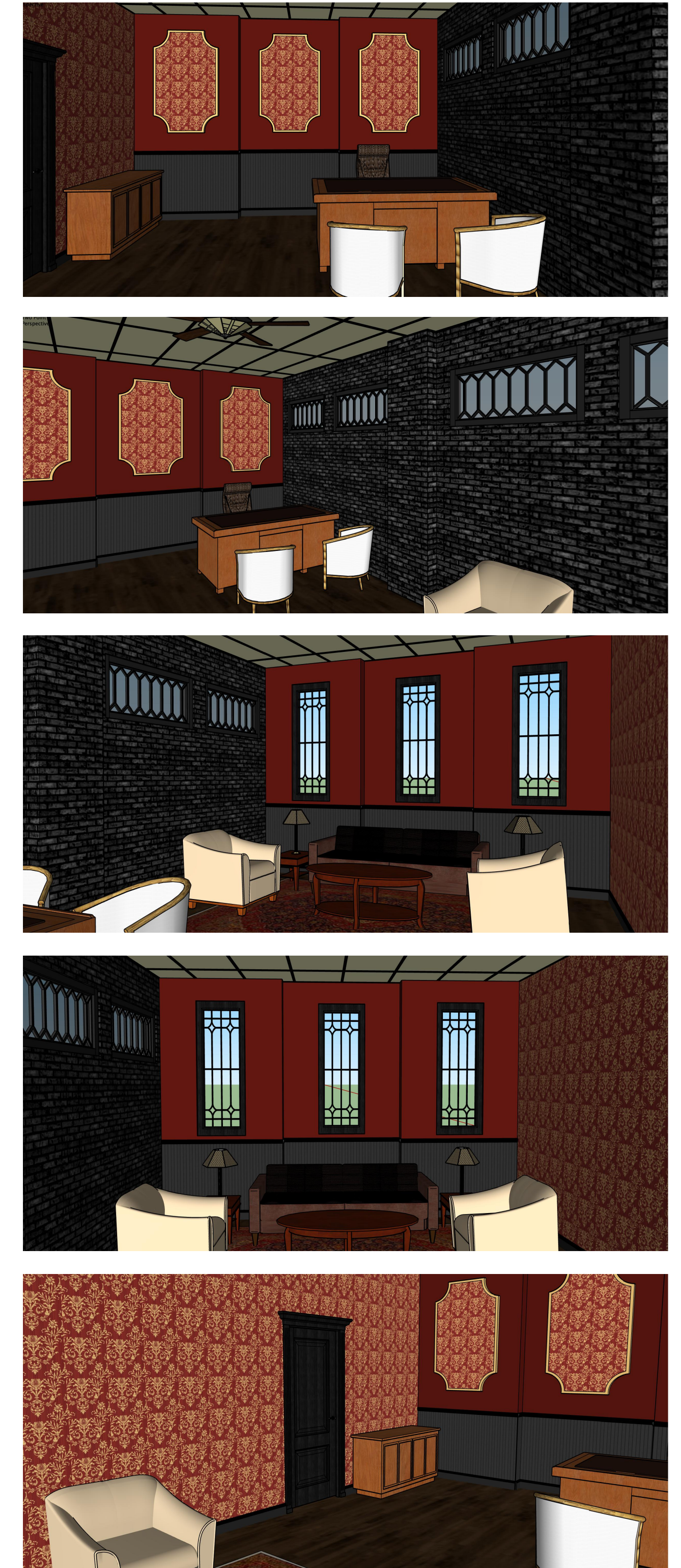
02 RCP
DUMAS' OFFICE SCALE: 1/2" = 1'-0"

NOTE: SEE A.D. FOR COLORS AND FINISHES

QUEEN OF THE SOUTH		SET TITLE: INT DUMAS' OFFICE	
		DESCRIPTION: PLAN AND RCP	
		LOCATION: STARIGHT STUDIOS - STAGE 1	
		SCALE: 1/2" = 1'-0"	
DRAWN BY: SP		DATE: 03.21.2019	SET # 49914
REVISOR: RYAN PALMER		REVISOR: CHRIS CRAINE	SHEET #
REVISOR: RYAN PALMER		REVISOR: CHRIS CRAINE	01 of 04

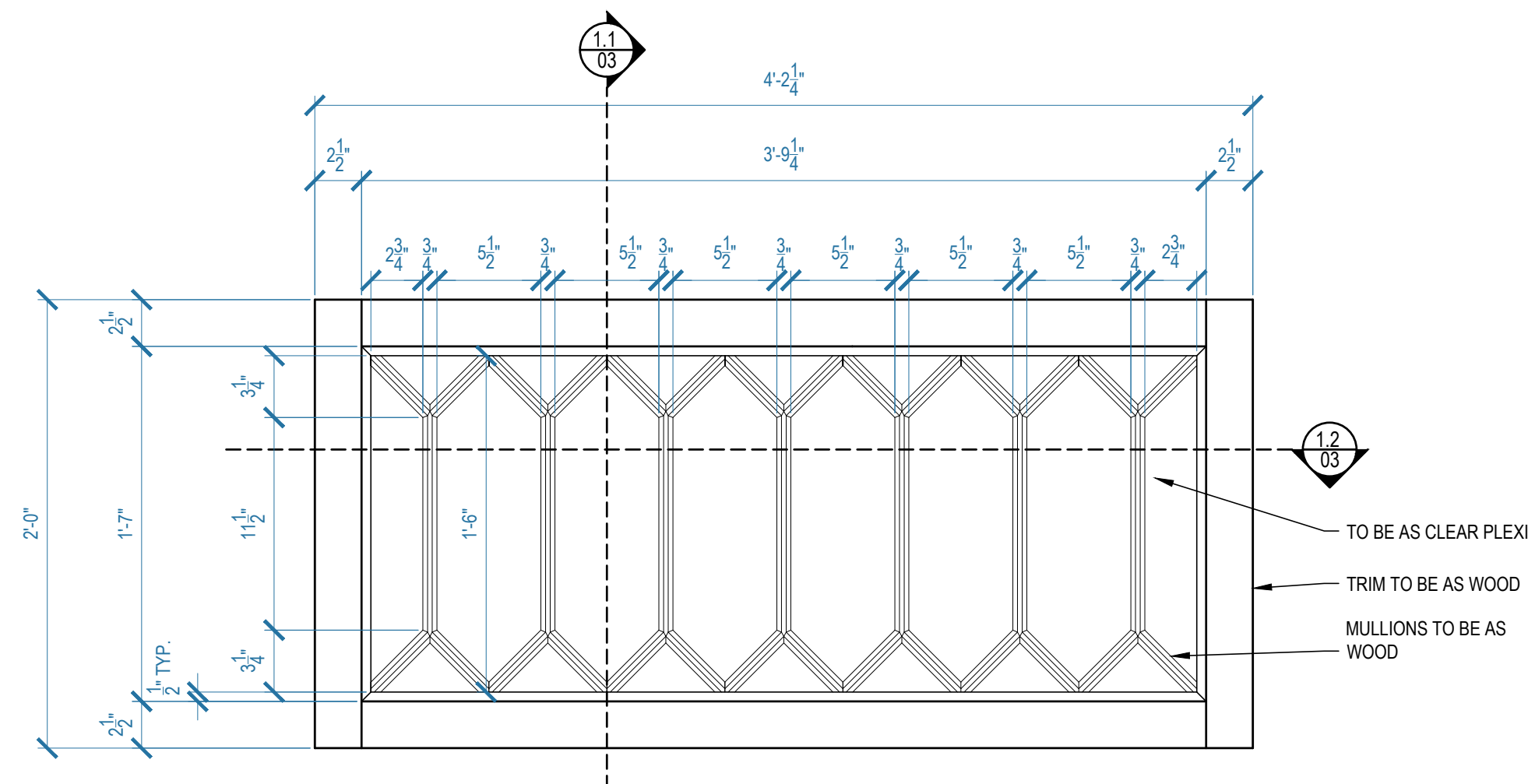


CONCEPT IMAGES



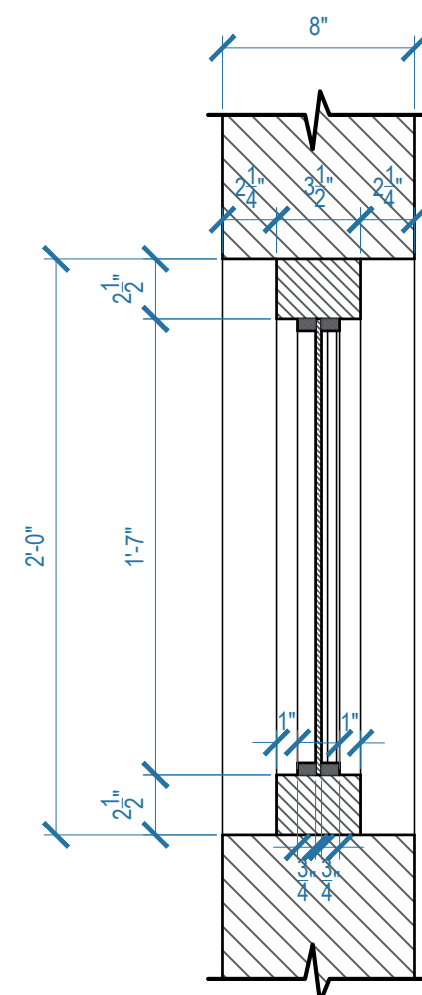
NOTE: SEE A.D. FOR COLORS AND FINISHES

<div> <div>QUEEN OF THE SOUTH</div> <div> PRODUCTION DESIGNER: RYAN PALMER ART DIRECTOR: CHRIS CRAINE </div> </div>		SET TITLE: INT DUMAS' OFFICE	
		DESCRIPTION: ELEVATIONS	
		LOCATION: STARIGHT STUDIOS - STAGE 1	
		SCALE: 1/2" = 1'-0"	
		DRAWN BY: SP	SET # 49914
		DATE: 03.21.2019	SHEET #
		REVISED ON: 03.25.2019	02 of 04
		REVISED ON:	

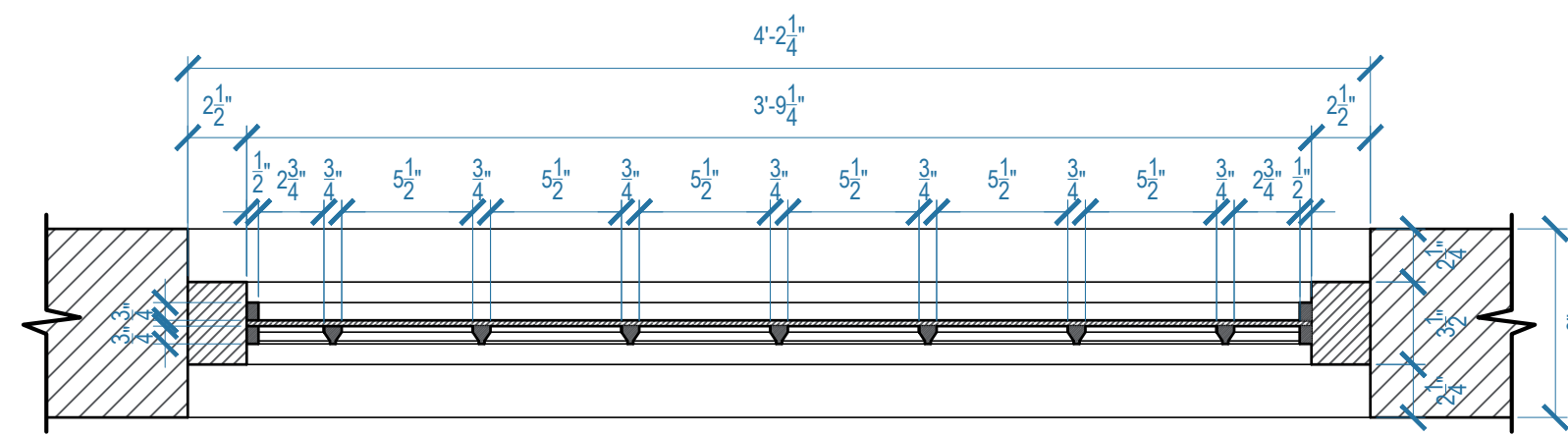


BUILD 4

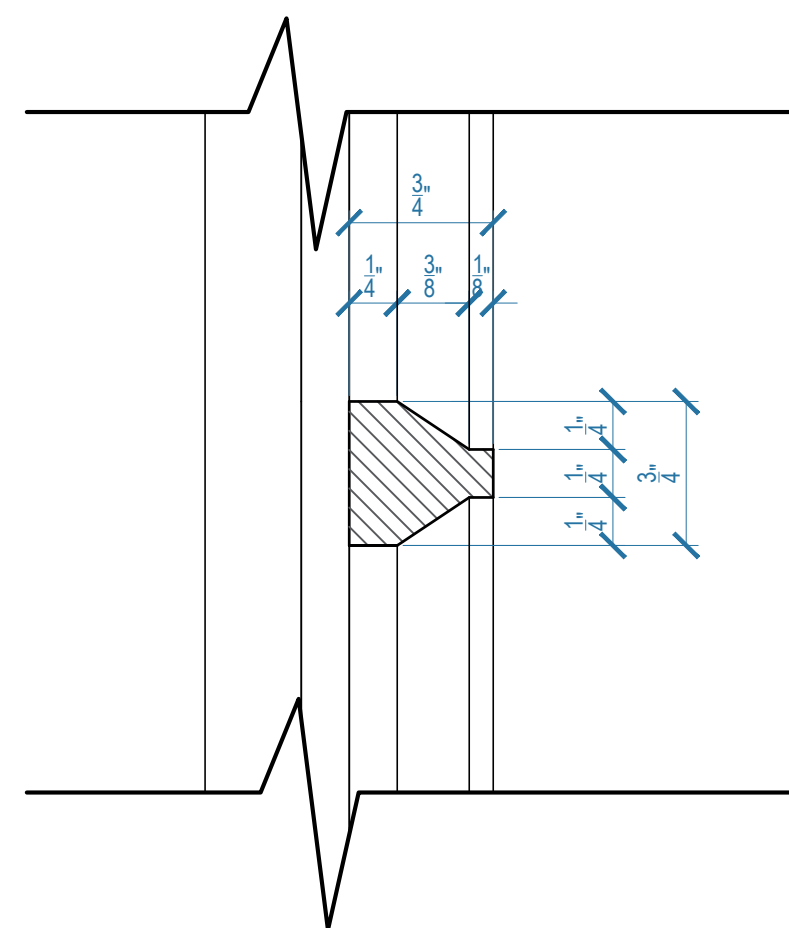
1.0 WINDOW 1 ELEVATION
DUMAS' OFFICE
SCALE: 1-1/2\"/>



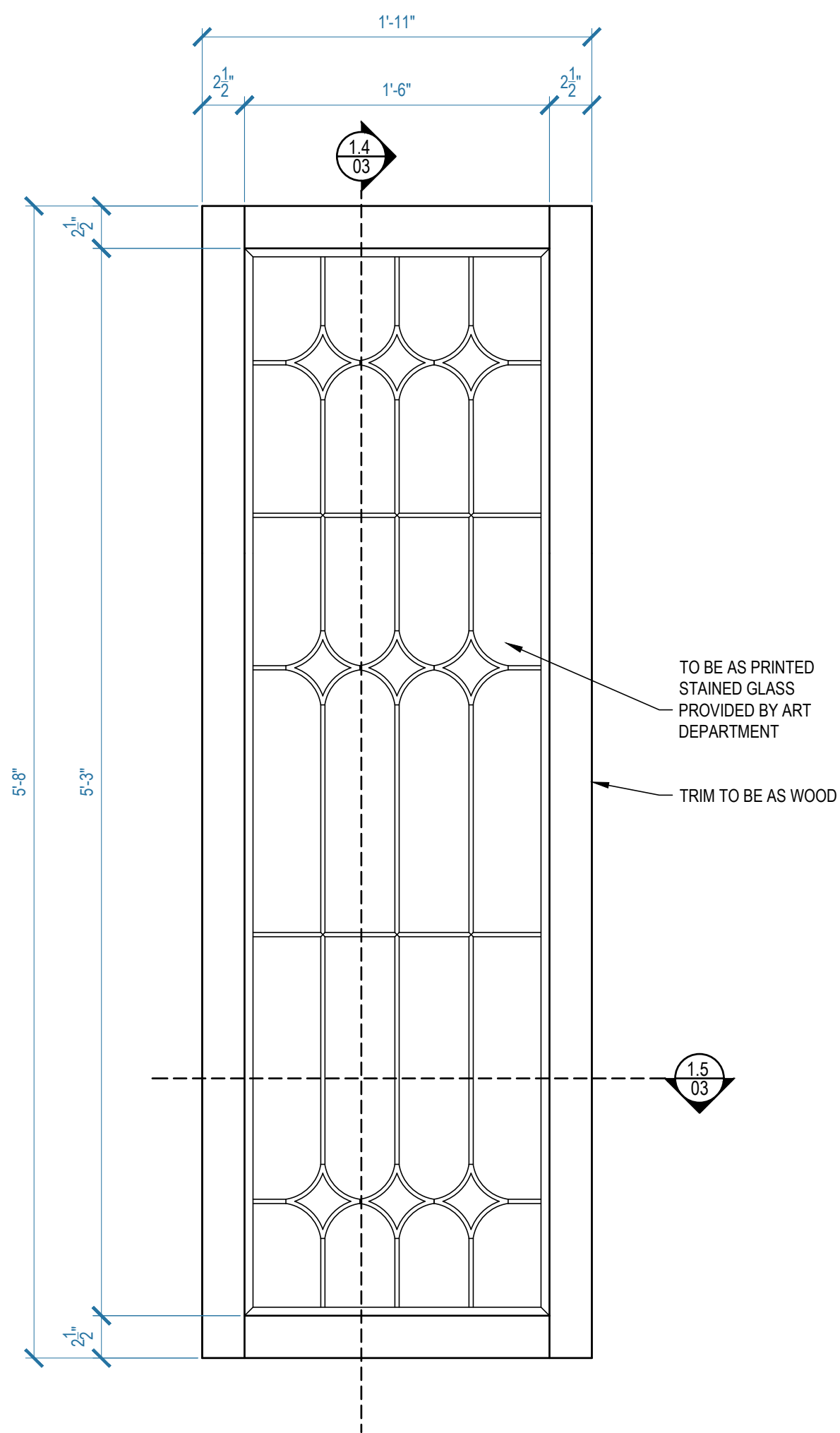
1.2 WINDOW 1 PLAN
DUMAS' OFFICE
SCALE: 1-1/2\"/>



1.1 WINDOW 1 PLAN
DUMAS' OFFICE
SCALE: 1-1/2\"/>

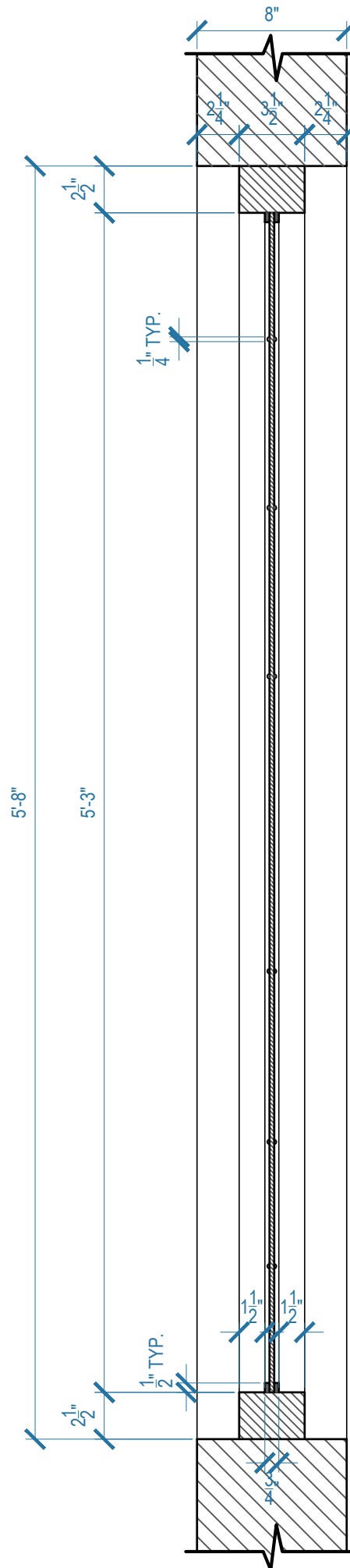


1.6 MULLION DETAIL - WINDOW
DUMAS' OFFICE
FULL SCALE

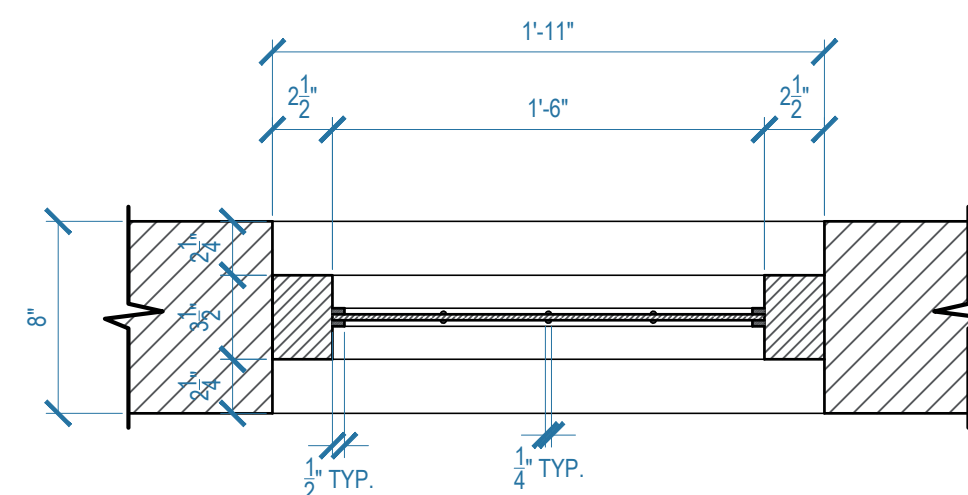


BUILD 3

1.3 WINDOW 2 ELEVATION
DUMAS' OFFICE
SCALE: 1-1/2\"/>



1.4 WINDOW 2 SECTION
DUMAS' OFFICE
SCALE: 1-1/2\"/>



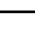
INT DUMAS' OFFICE

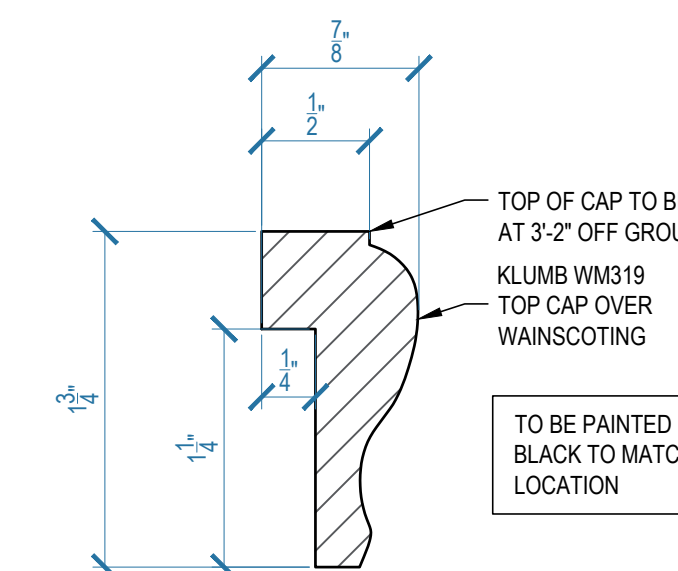
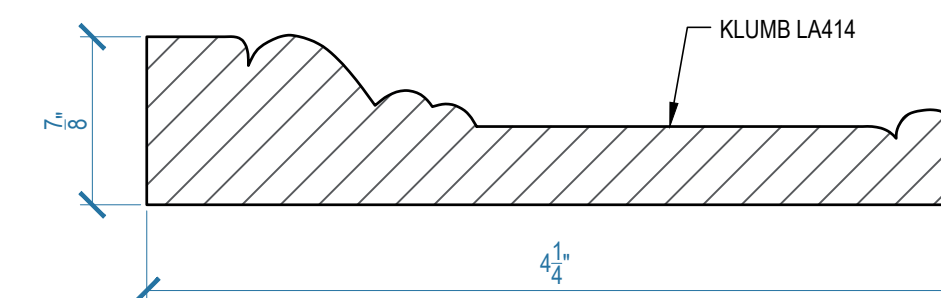
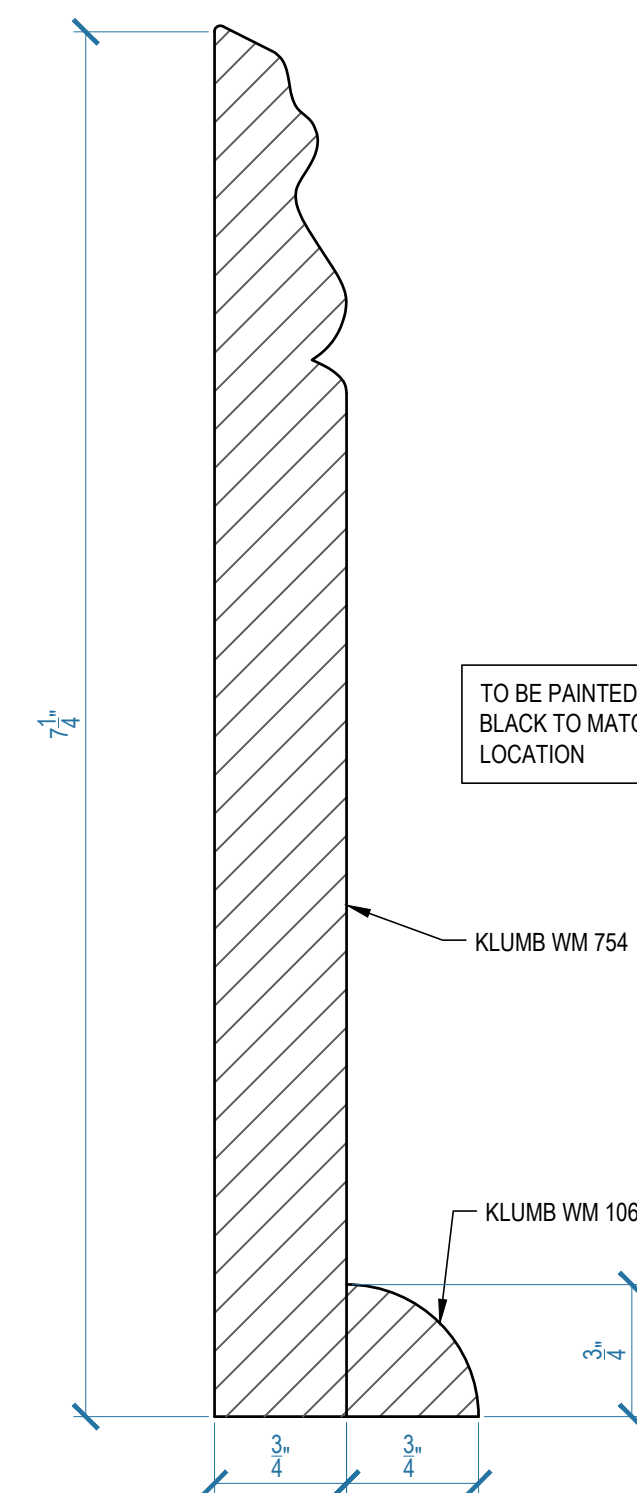
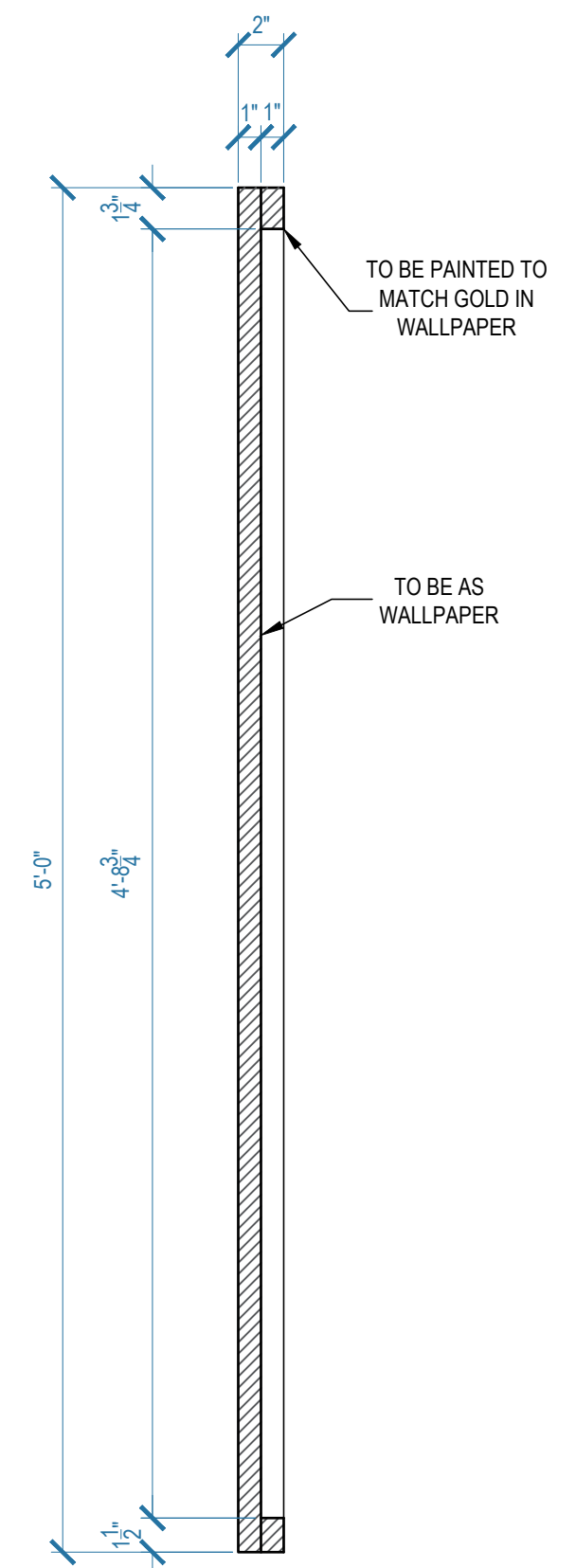
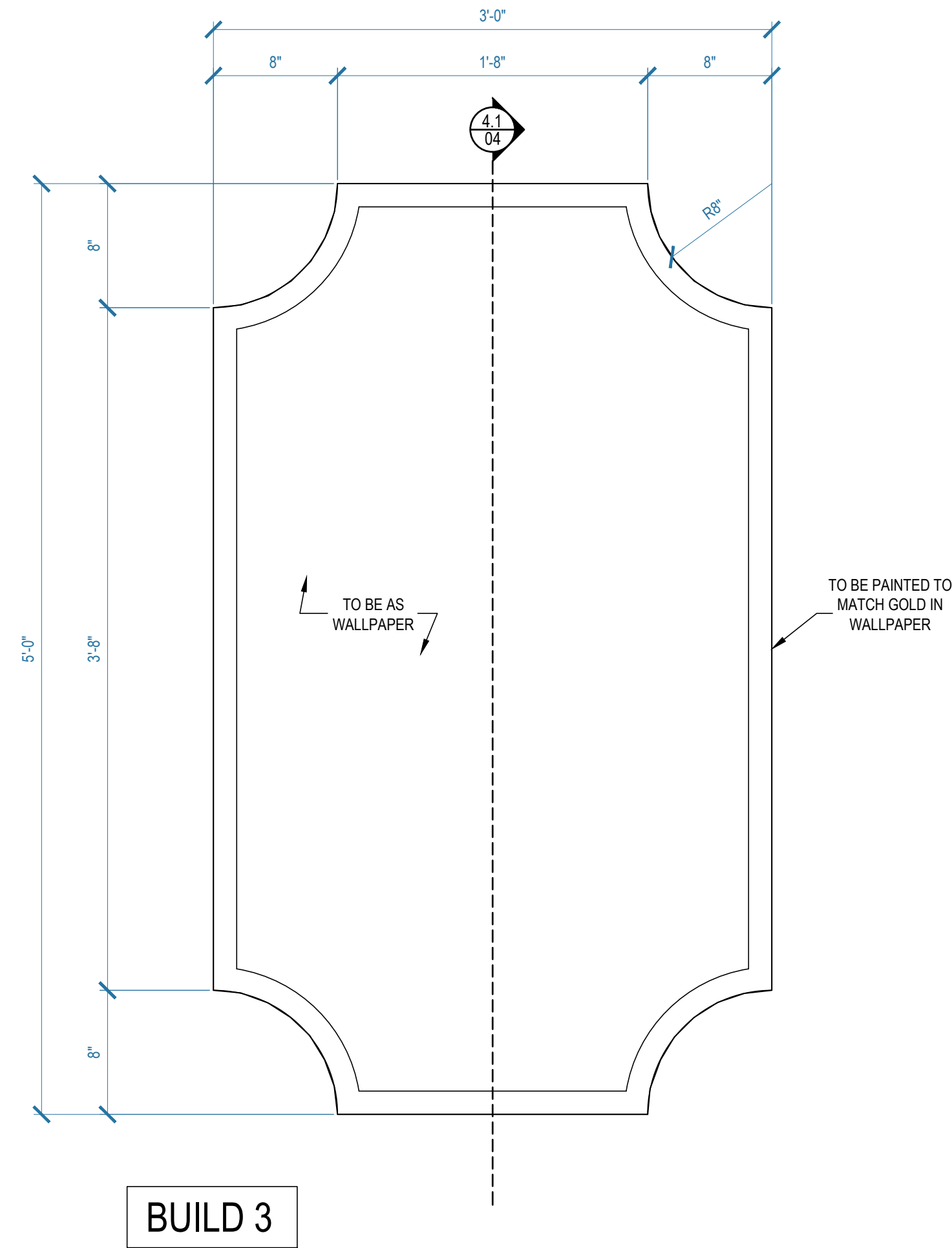
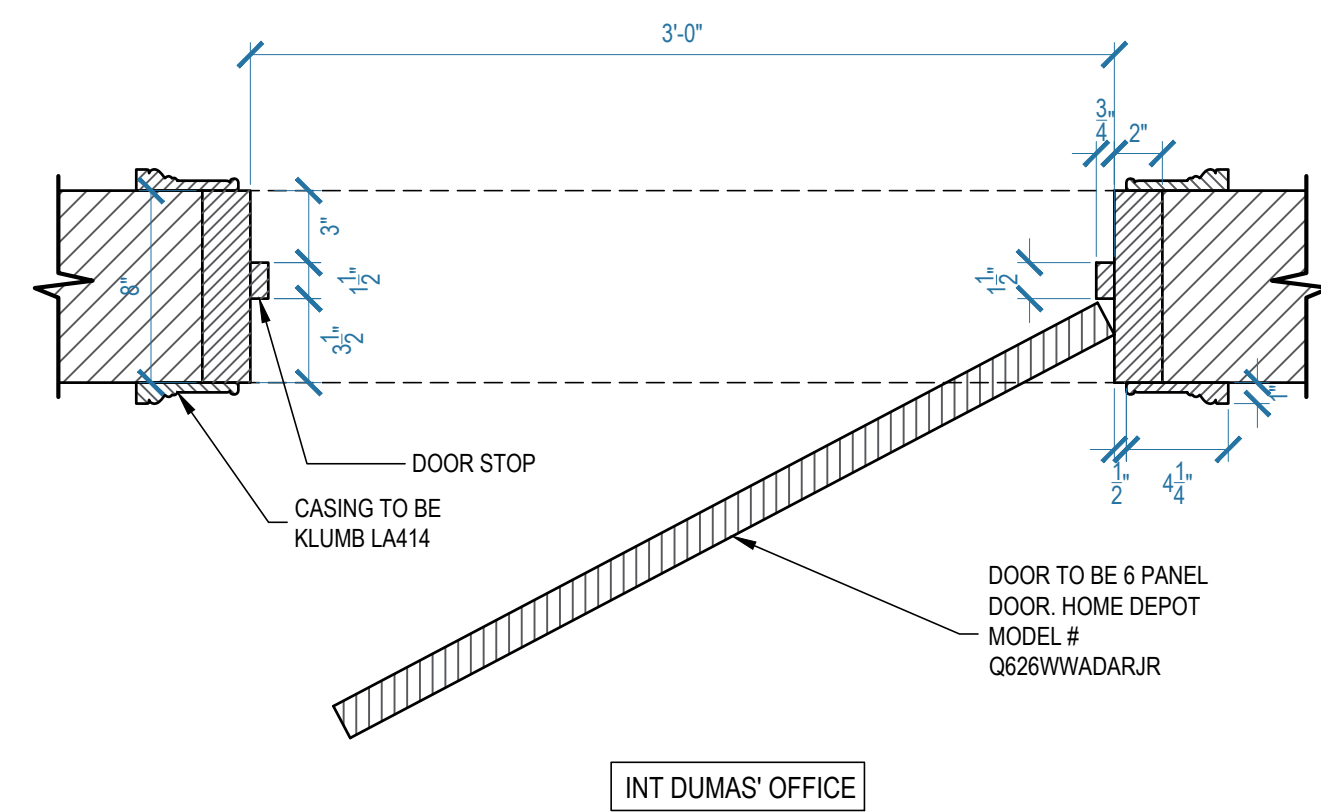
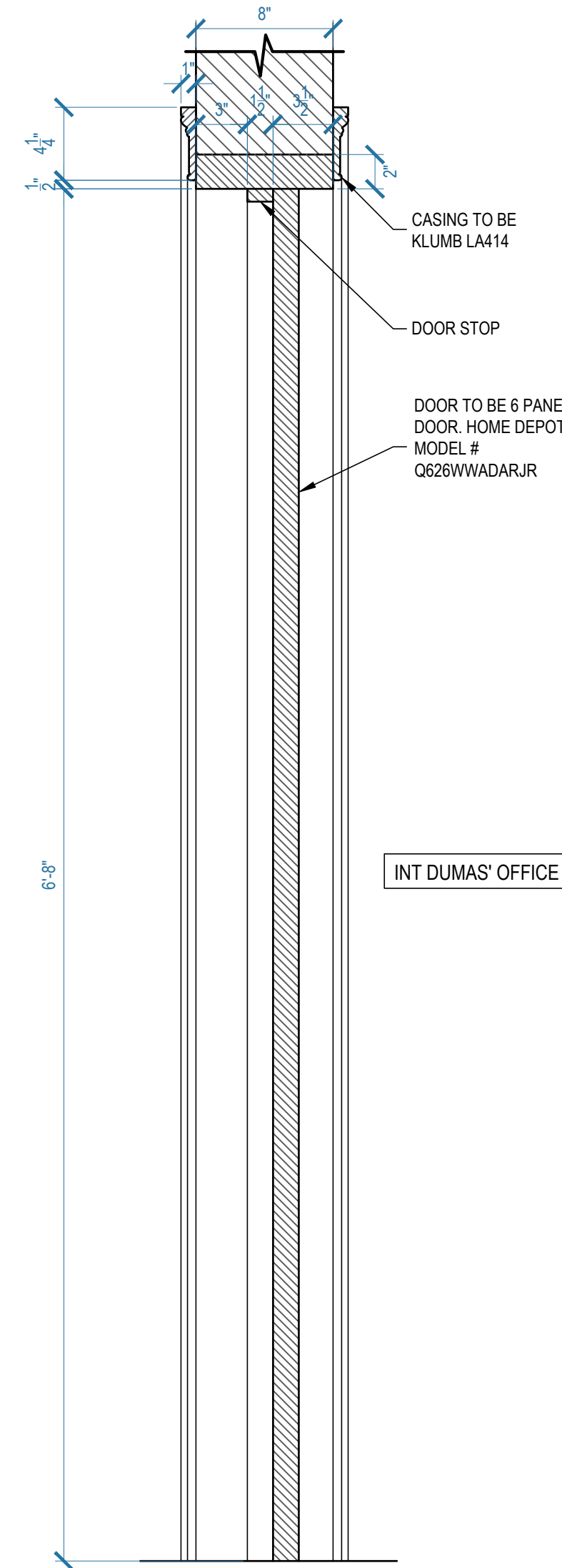
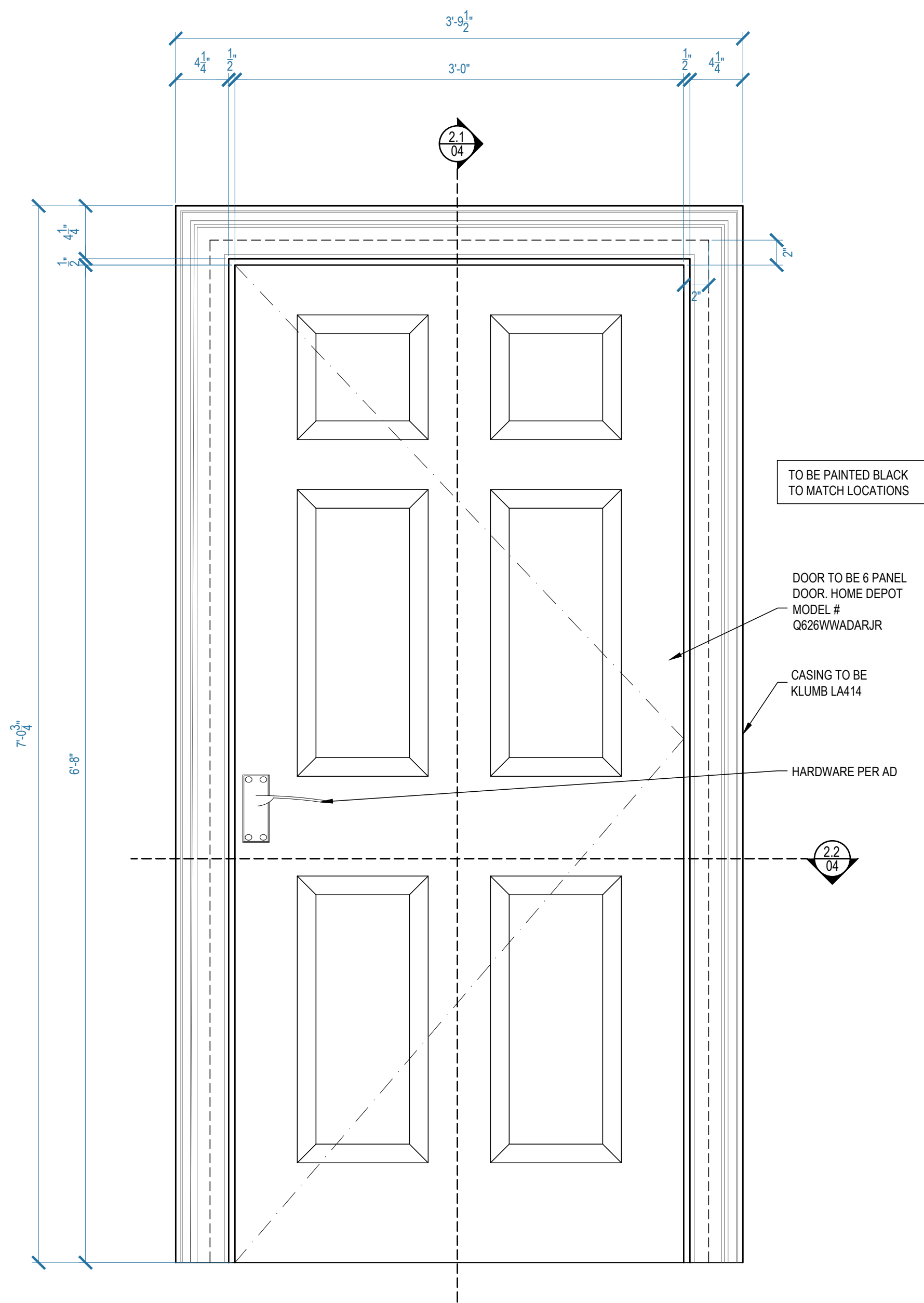
1.5 WINDOW 2 PLAN
DUMAS' OFFICE
SCALE: 1-1/2\"/>

NOTE: SEE A.D. FOR COLORS AND FINISHES

QUEEN
OF THE
SOUTH

PRODUCTION DESIGNER: RYAN PALMER
ART DIRECTOR: CHRIS CRAINE

SET TITLE: INT DUMAS' OFFICE	
DESCRIPTION: WINDOW DETAILS	
LOCATION: STARIGHT STUDIOS - STAGE 1	
SCALE: 1-1/2" = 1'-0"	
DRAWN BY: SP	SET # 49914
DATE: 03.21.2019	SHEET #
REVISED ON: 03.25.2019 	03 of 04
REVISED ON:	



NOTE: SEE A.D. FOR COLORS AND FINISHES

QUEEN OF THE SOUTH		SET TITLE: INT DUMAS' OFFICE	
PRODUCTION DESIGNER: RYAN PALMER ART DIRECTOR: CHRIS CRAINE		DESCRIPTION: DETAILS	
		LOCATION: STARIGHT STUDIOS - STAGE 1	
		SCALE: AS NOTED	
		DRAWN BY: SP	SET # 49914
		DATE: 03.21.2019	SHEET #
		REVISED ON:	04 of 04
		REVISED ON:	